



## PLASTIC PADDLES



### AC1

1 Nylon 6 blade.

**50 x 100 mm**

Minimum material density: **1,0 kg/dm<sup>3</sup>**

Suitable for: **G 2" 1/2 - G 1" 1/2 - G 1" 1/4**

Min. hole ø  
**39 mm**

Material/weight\*



### AC2

3 Nylon 6 blades.

**120 x 65 mm**

Minimum material density: **0,3 kg/dm<sup>3</sup>**

Installation with flange or from inside the silo

Min. hole ø  
**125 mm**

Material/weight\*



### AC4

1 Nylon 6 blade.

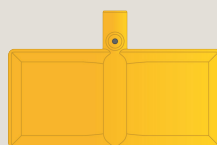
**60 x 100 mm**

Minimum material density: **0,5 kg/dm<sup>3</sup>**

Suitable for: **G 2" 1/2**

Min. hole ø  
**65 mm**

Material/weight\*



### AC9

1 Nylon 6 blades.

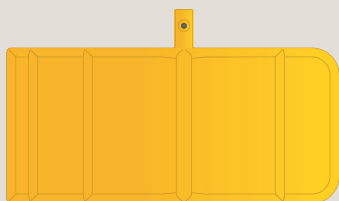
**140 x 65 mm**

Minimum material density: **0,2 kg/dm<sup>3</sup>**

Installation with flange or from inside the silo

Min. hole ø  
**145 mm**

Material/weight\*



### AC13

2 Nylon 6 blades.

**304 x 142 mm**

Minimum material density: **0,02 kg/dm<sup>3</sup>**

Installation with flange or from inside the silo

Min. hole ø  
**305 mm**

Material/weight\*



### AC19

1 Lathiom 52/11-08 PD02 blade.

Suitable for use in contact with food products.

**145 x 70 mm**

Minimum material density: **0,3 kg/dm<sup>3</sup>**

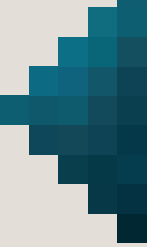
Suitable for: **G 2" 1/2 - G 1" 1/2 - G 1" 1/4**

Min. hole ø  
**39 mm**

Material/weight\*



\***Very light:** e.g. polystyrene - **Light:** e.g. ash - **Medium:** e.g. corn, flour, coffee grains, wheat - **Heavy:** e.g. gravel



## STAINLESS STEEL PADDLES



Min. hole ø  
39 mm

Material/weight\*



### AC1-INOX

1 AISI 304 stainless steel blade.

**50 x 100 mm**

Minimum material density: **1,0 kg/dm<sup>3</sup>**

Suitable for: **G 2" 1/2 - G 1" 1/2 - G 1" 1/4**



Min. hole ø  
105 mm

Material/weight\*



### AC3-INOX

4 AISI 304 stainless steel blades.

**100 x 60 mm**

Minimum material density: **0,3 kg/dm<sup>3</sup>**

Installation with flange or from inside the silo



Min. hole ø  
65 mm

Material/weight\*



### AC4-INOX

1 AISI 304 stainless steel blade.

**60 x 100 mm**

Minimum material density: **0,5 kg/dm<sup>3</sup>**

Suitable for: **G 2" 1/2**



Min. hole ø  
140 mm

Material/weight\*



### AC5-INOX

4 AISI 304 stainless steel blades.

**138 x 50 mm**

Minimum material density: **0,2 kg/dm<sup>3</sup>**

Installation with flange or from inside the silo



Min. hole ø  
100 mm

Material/weight\*



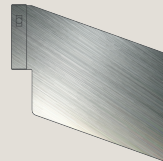
### AC5L-INOX

4 AISI 304 stainless steel blades.

**100 x 110 mm**

Minimum material density: **0,2 kg/dm<sup>3</sup>**

Installation with flange or from inside the silo



Min. hole ø  
110 mm

Material/weight\*



### AC6-INOX

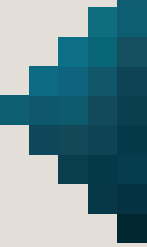
1 AISI 304 stainless steel blade.

**140 x 150 mm**

Minimum material density: **0,1 kg/dm<sup>3</sup>**

Installation with flange or from inside the silo

\***Very light:** e.g. polystyrene - **Light:** e.g. ash - **Medium:** e.g. corn, flour, coffee grains, wheat - **Heavy:** e.g. gravel



## STAINLESS STEEL PADDLES



### AC7-INOX

1 AISI 304 stainless steel blade.  
**60 x 145 mm**  
 Minimum material density: **0,3 kg/dm<sup>3</sup>**

Suitable for: **G 2" 1/2**

Min. hole ø  
**65 mm**

Material/weight\*



### AC8-INOX

4 AISI 304 stainless steel ropes.  
 Diameter: **260 mm**  
 Minimum material density: **2,0 kg/dm<sup>3</sup>**

Suitable for: **G 2" 1/2**

Min. hole ø  
**100 mm**

Material/weight\*



### AC9-INOX

2 AISI 304 stainless steel blades.  
**140 x 65 mm**  
 Minimum material density: **0,2 kg/dm<sup>3</sup>**

Installation with flange or from inside the silo

Min. hole ø  
**145 mm**

Material/weight\*



### AC10-INOX

2 AISI 304 stainless steel blades.  
**70 x 135 mm**  
 Minimum material density: **0,6 kg/dm<sup>3</sup>**

Suitable for: **G 2" 1/2**

Min. hole ø  
**75 mm**

Material/weight\*



### AC11-INOX

4 AISI 304 stainless steel blades.  
**150 x 110 mm**  
 Minimum material density: **0,1 kg/dm<sup>3</sup>**

Installation with flange or from inside the silo

Min. hole ø  
**155 mm**

Material/weight\*



### AC12-INOX

1 AISI 304 stainless steel blade.  
**160 x 95 mm** - Width: 30 mm  
 Minimum material density: **0,4 kg/dm<sup>3</sup>**

Suitable for: **G 2" 1/2 - G 1" 1/2 - G 1" 1/4 - G 1"**

Min. hole ø  
**30 mm**

Material/weight\*



\***Very light:** e.g. polystyrene - **Light:** e.g. ash - **Medium:** e.g. corn, flour, coffee grains, wheat - **Heavy:** e.g. gravel



## STAINLESS STEEL PADDLES



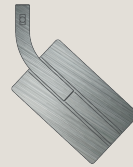
### AC14-INOX

1 AISI 304 stainless steel blade.  
**130 x 150 mm** - Width: 28 mm  
 Minimum material density: **0,4 kg/dm<sup>3</sup>**

Suitable for: **G 2" 1/2 - G 1" 1/2 - G 1" 1/4 - G 1"**

Min. hole ø  
**30 mm**

Material/weight\*



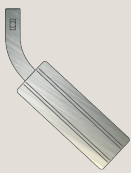
### AC15-INOX

1 AISI 304 stainless steel blade.  
**127 x 157 mm** - Width: 68 mm  
 Minimum material density: **0,2 kg/dm<sup>3</sup>**

Suitable for: **G 2" 1/2**

Min. hole ø  
**70 mm**

Material/weight\*



### AC16-INOX

1 AISI 304 stainless steel blade.  
**118 x 150 mm** - Width: 40 mm  
 Minimum material density: **0,3 kg/dm<sup>3</sup>**

Suitable for: **G 2" 1/2 - G 1" 1/2**

Min. hole ø  
**42 mm**

Material/weight\*



### AC17-INOX

4 AISI 304 stainless steel blades.  
**70 x 100 mm**  
 Minimum material density: **0,4 kg/dm<sup>3</sup>**

Suitable for: **G 2" 1/2**

Min. hole ø  
**72 mm**

Material/weight\*



### AC18-INOX

4 AISI 304 stainless steel blades.  
**70 x 50 mm**  
 Minimum material density: **0,7 kg/dm<sup>3</sup>**

Suitable for: **G 2" 1/2**

Min. hole ø  
**72 mm**

Material/weight\*



\***Very light:** e.g. polystyrene - **Light:** e.g. ash - **Medium:** e.g. corn, flour, coffee grains, wheat - **Heavy:** e.g. gravel