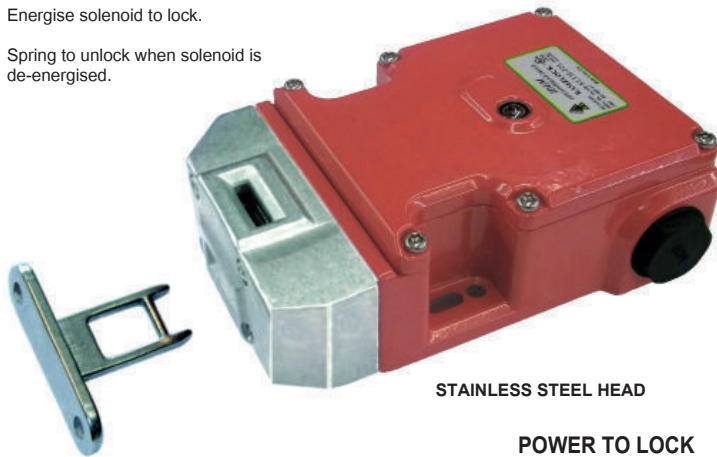


Guard Locking Switch Metal Type: RAMZLOCK KLTM-P2L

FEATURES:

Energise solenoid to lock.

Spring to unlock when solenoid is de-energised.



STAINLESS STEEL HEAD

POWER TO LOCK



Solenoid Locking Interlock Safety Switch featuring POWER TO LOCK with Guard Holding up to 3000N (300Kg) (F1Max)

KLTM-P2L Series Guard Locking switches have a rugged die cast metal body design with a stainless steel head. They have been developed with a holding force of 3000N to keep large guard doors closed until hazards have been removed.

They are Power to Lock - Spring to Unlock - suitable for applications where immediate unlocking is required at removal or loss of power.

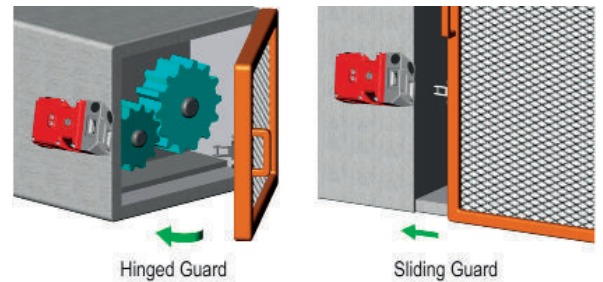
(They are NOT suitable for machines with a running down time).

The rugged die cast body provides a durable robust hold closed interlock protection and the stainless steel head provides extra durability. Flexible actuators are available to aid where some alignment is a problem.

IP67 enclosure protection is maintained by a double seal lid gasket design and metal fixings.

They have a low profile and fixing holes are on an industry standard 73mm centre to enable easy retrofitting to new or existing guards.

The head will rotate to provide up to 4 actuator entry positions.



Hinged Guard

Sliding Guard

FUNCTIONAL SPECIFICATIONS:

Positive Break Contacts to EN60947-5-1

High Functional Safety to ISO13849-1

Die Cast Metal Housing (painted red)

Stainless Steel Head version available

Connects to most Safety Relays to give up to PLe Cat.4

Quick Connector version available for ease of installation

Machine safety contacts open when power is released

LED Status of Solenoid Power

4NC Safety Circuits:

1NC 1NO Auxiliary circuits - Actuator/Door Status

KLTM-P2L

4NC Safety Contacts:

2 Guard Closed

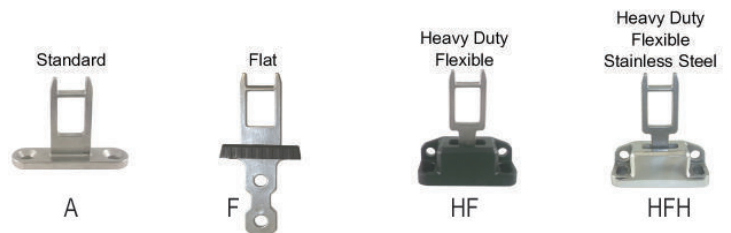
2 Switch Locked

1NO Auxiliary Contact (Guard Open)

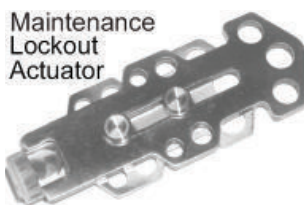
1NO Auxiliary Contact (Guard Locked)

LED RED Solenoid Power On

ACTUATOR OPTIONS (see p100)



MAINTENANCE LOCKOUT ACTUATOR



Fits to switch aperture during maintenance and provides multiple padlock holes. (See p100-101.)

Standards: EN14119 EN60947-5-1 EN60204-1
ISO13849-1 EN62061 UL508

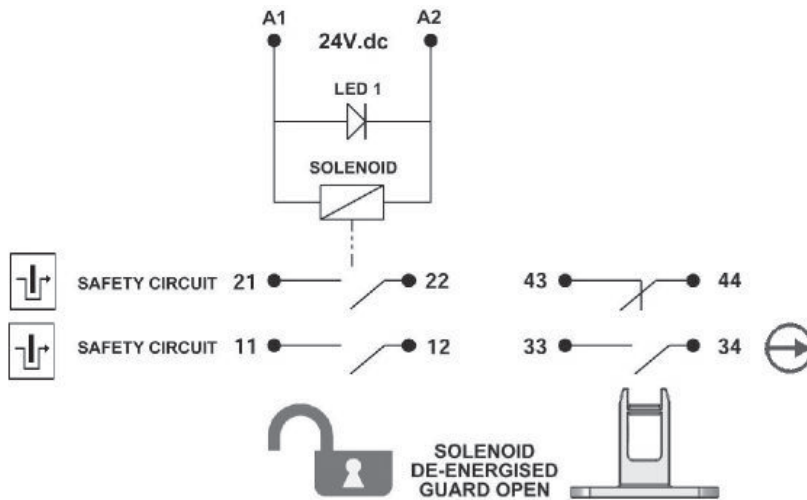
Safety Classification and Reliability Data:

Mechanical Reliability B10d	2.5 x 10 ⁶ operations at 100mA load
ISO13849-1	Up to PLe depending upon system architecture
EN62061	Up to SIL3 depending upon system architecture
Safety Data – Annual Usage	8 cycles per hour/24 hours per day/365 days
	MTTFd 356 years
Solenoid Voltage (by Sales Number)	24Vdc
Solenoid Wattage	12W (Inrush 50W)
Utilization Category	AC15 A300 3A
Thermal Current (Ith)	5A
Travel for Positive Opening	10mm
Actuator Entry Minimum Radius	175mm Standard 100mm Heavy Duty
Maximum Approach/Withdrawal Speed	600mm/s
Holding Force	F1Max 3000N Fzh 2307N
Body Material	Die Cast (painted red)
Head Material	Stainless Steel 316
Enclosure Protection	IP67
Operating Temperature	-25C +40C
Vibration	IEC 68-2-6 10-55Hz + 1Hz
	Excursion 0.35mm 1 octave/min
Conduit Entry	Various (See Sales Number)
Fixing	4 x M5

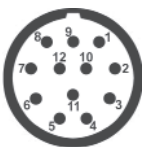
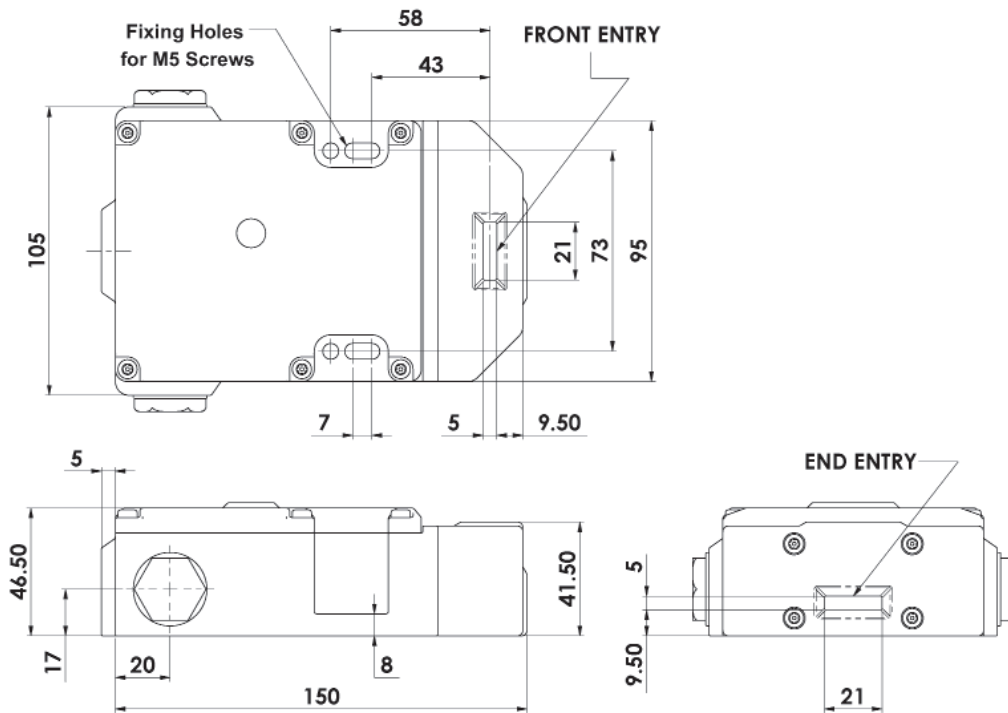
For all IDEM Power to Lock switches the normally closed (NC) circuits are closed when the guard is closed actuator inserted and power is applied to the solenoid.

Guard Locking Switch Metal Type: RAMZLOCK KLTM-P2L

SCHEMATIC CIRCUIT:



DIMENSIONS:



Quick Connect (QC) M23 12 Way Male Plug Connector Length 24mm Pin View from Switch		KLTM Switch Circuit	
1	3	A1	A2
4	6	11/12	
7	8	21/22	
2	5	43/44	
9		33	
10		34	
12		Earth	



FEMALE QC LEADS	LENGTH	SALES NUMBER
M23 12 Way	5m (15ft)	140143
M23 12 Way	10m (30ft)	140144

SALES NUMBER	SOLENOID VOLTAGE	M20	1/2" NPT	QC M23
Kobra KLTM-P2L Switch	24V dc	450021	450022	450023
To order Switch with Actuator				
Kobra Actuator	Standard	Add A	to Sales Part Number	
Kobra Actuator	Flat	Add F	to Sales Part Number	
Kobra Actuator	Heavy Duty Flexible	Add HF	to Sales Part Number	
Kobra Actuator	S/Steel Heavy Duty Flexible	Add HFH	to Sales Part Number	